

# Hitch control valves HCV12

Operating pressure: max. 250 bar  
Flow: max. 120 l/min



## General description:

The hitch control valve provides a solution for the proportional, load-independent control of single-sided acting consumers, including the functionality of maintaining oil leak freeness via a pilot operated check valve.

The valve is intended for use in constant pressure and load sensing systems.

Up to three memories can be installed as applications - of which two can be optionally switchable and with which the springs or attenuation from work attachments for example from mobile work machines.

Moreover, CL02 valve functions can be installed directly on the block over the flange areas.

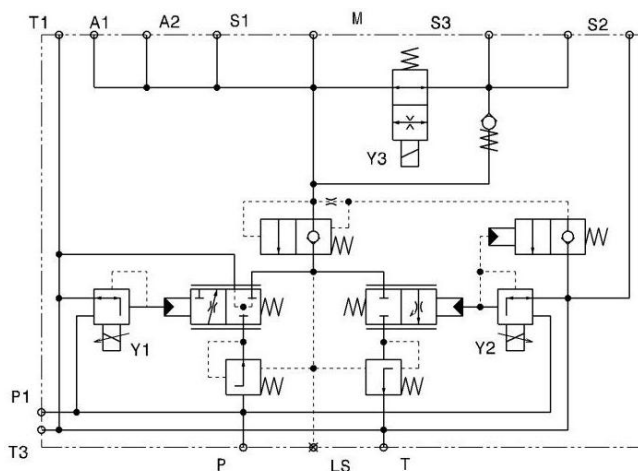
Housing bores can also be used to incorporate pressure sensors.

Combined with job computers, this valve can realise stable regulation with rapid dynamics.

## Area of use:

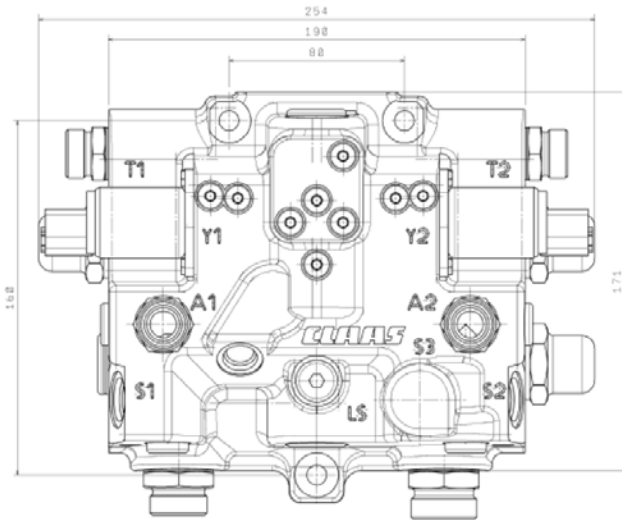
The valve is specially designed for regulating the loading of attachments in combine harvesters and forage harvesters and enables the simultaneous activation of two hoist cylinders with its nominal volume flow of up to 120 l/min.

## Wiring diagram

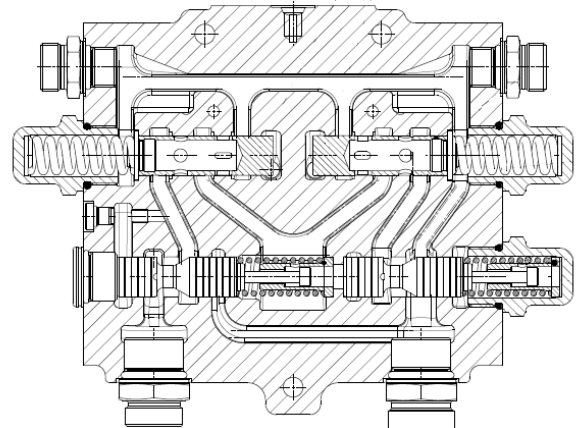


# Hitch control valves HCV12

Dimensions



Cross section



General data	Value	Unit	Specifications
Construction type			3/3-way sliding valve
Construction			Pilot operated proportional valve
Flow direction			P -> A1 + A2 ->T
Fitting position			As desired
Ambient temperature	- 25	°C	min.
	+ 60	°C	max.
Input operating pressure	250	bar	max.
Load operating pressure	250	bar	max.
Tank operating pressure	30	bar	max.
Oil temperature	- 25	°C	min.
	+ 80	°C	max.
Oil viscosity	2.8	cSt	min.
	380	cSt	max.
Opt. operational viscosity	35	cSt	
Permissible oil types			Mineral oil HL, HLP according to DIN 51524
Oil purity			ISO 4406: class 21/18/14 or better
Regular oil flow			50, 60, 70, 85, 100, 120 l/min at nominal current 1.5 A 12 VDC or 0.8 A at 24 VDC
Influx	120	l/min	
Leakage at A or B	< 100	cm <sup>3</sup> /min.	At oil viscosity 35 cSt
Control pressure difference	10	bar	min.
Hysteresis	+/- 2	%	Related to the nominal value
Rec. PWM frequency	150	Hz	