

# Low pressure valves ND50

Operating pressure: max. 50 bar  
Flow: max. 10 l/min



## General description:

The ND50 low pressure valve series is a modular construction kit of individual valves that can be flanged together. This construction kit consists of 3/2-way valves, pressure restriction and pressure regulation valves. The individual elements can be flanged together and hence interconnected in parallel. The valve construction series is based on aluminium pressure die-casting housing and plastic inserts which are manufactured in areas with large quantities. Therefore an optimised cost situation can be guaranteed for the customer.

The corrosion-proofness category K2 according to CLAAS works standard CN 04 0102 is met. The space between the magnetic coil and the pole tube is sealed with O-rings to avoid the penetration of aggressive fluids such as plant sap.

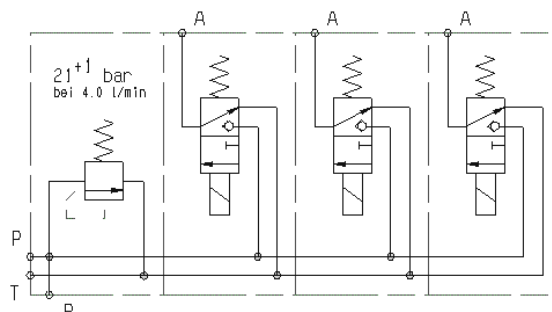
## Function:

The ND50 low pressure valve series can be used:

- as a 3/2-way valve
- as a pressure restriction valve

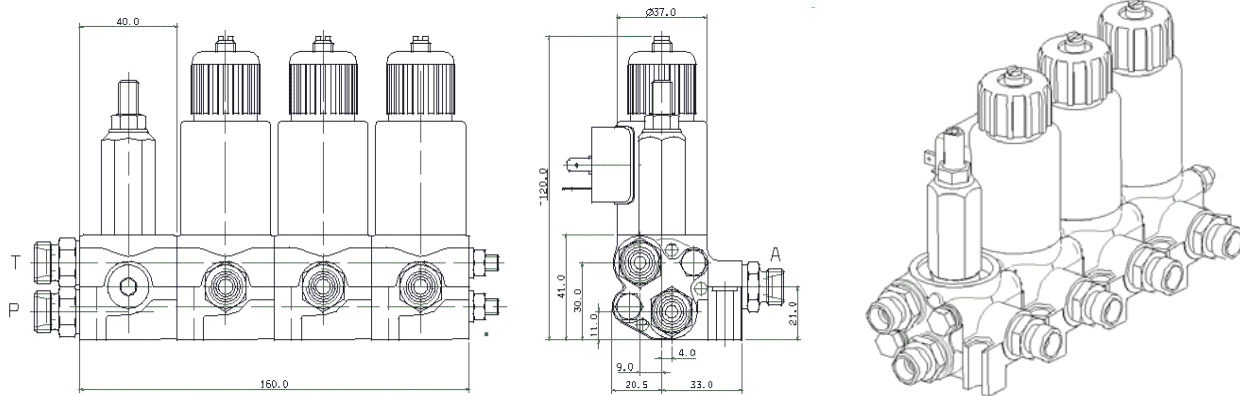
The valve is highly suitable for switching clutches in mobile applications where the feed pressure supply of the drive unit can be utilised.

## Sample wiring diagram



# Low pressure valves ND50

Dimensions based on an example of a triple block with a pressure restriction valve



General data	Value	Unit	Specifications
Construction type			Valve module in disc design
Construction			Direct operated poppet valve
Sealing			NBR
Fitting position			As desired
Ambient temperature	-25	°C	min.
	+ 60	°C	max.
Input operating pressure	50	bar	max. (at input DRV: 250 bar)
Output operating pressure	50	bar	max.
Oil temperature	-25	°C	
	+ 80	°C	
Oil viscosity	2.8	cSt	min.
	380	cSt	max.
Opt. operational viscosity	35	cSt	
Permissible oil types			Mineral oil (HL, HVLP) according to DIN 51524 Bio oil HVLPD HC / HEPR-biologically degradable Further liquids upon request
Oil purity			ISO 4406: 22/20/17
Weight	approx. 0.58	kg	per segment
Volume flow	9	l/min	at dp=15 bar