

Flow control valves CR10

Operating pressure: 270 bar
Flow: 70 l/min



General description:

CR10 current regulation valves are used for the infinitely variable setting of the speed of hydraulic motors or the speed of cylinders through an electrical activation cycle.

The regular oil flow is largely independent of the load pressure and oil viscosity.

As a clamp-in valve, the CR10 flow regulation valve is easy to integrate in valve discs or valve blocks with further directional valves, blocking valves and pressure valves.

Therefore, customer-specific functions can be realised, the geometric location of the connections and the attachment taken into account and, as necessary, individual components can be disassembled.

The valve meets corrosion-proofness category K2 according to CLAAS works standard CN 04 0102.

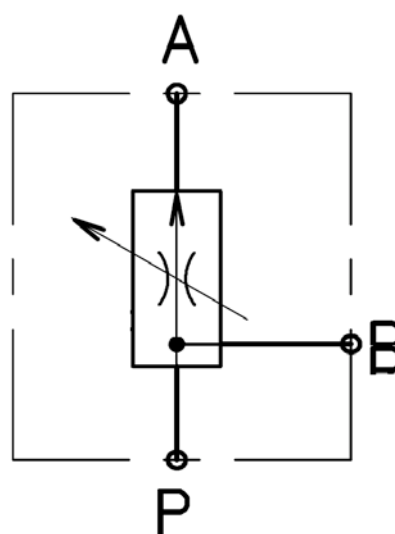
The space between the magnetic coil and the pole tube is sealed with O-rings to avoid the penetration of aggressive fluids such as plant sap.

Function:

The CR10 current regulation valve can be used:

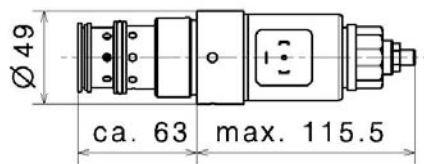
- in 2-way operation on an LS variable hydraulic pump or a constant pressure system
- in 3-way operation on a constant pump and forwarding the remaining oil flow

Wiring diagram

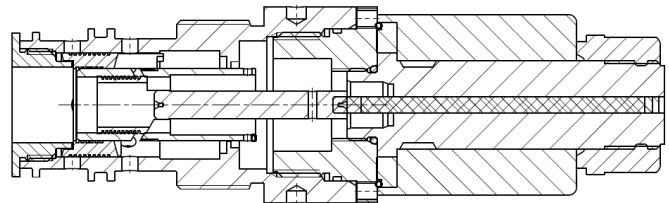


Flow control valves CR10

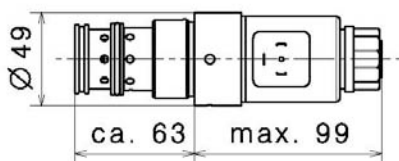
Current regulation valve dimensions with lockable emergency manual operation



Cross section



Current regulation valve dimensions with undetachable emergency manual operation



General data	Value	Unit	Specifications
Construction type			Screw-in cartridge valve
Construction			Directly controlled current regulation valve
Flow direction			P -> A regular oil flow P -> B loadable regular oil flow (optional)
Sealing			NBR
Neutral position			Aperture deactivated closed
Fitting position			As desired
Ambient temperature	-25	°C	min.
	+ 60	°C	max.
Input operating pressure	270	bar	max.
Output operating pressure	270	bar	max.
Oil temperature	-25	°C	min.
	+ 80	°C	max.
Oil viscosity	2.8	cSt	min.
	380	cSt	max.
Opt. operational viscosity	35	cSt	
Permissible oil types			Mineral oil HL, HLP, HVLP DIN 51524-1..3 Mineral oil HR, HV DIN EN ISO 6743-4
Oil purity			ISO 4406: class 21/18/14 or better
Weight	1.27	kg	
Regular oil flow		l/min	20, 30, 40, 50, 60 at nominal solenoid current 1.9 A 12VDC or 1.0 A 24VDC
Influx	100	l/min	
Leakage	<100	cm ³ /min	in 2-directional operation
Control pressure difference	7	bar	min.
Hysteresis	+/- 2	%	Load-dependent,
	+/- 3.5	%	Activation-dependent, related to the max. regular oil flow
Rec. PWM frequency	300	Hz	