

Directional seat valves CL02

Operating pressure: max. 250 bar
Flow: max. 20 l/min



General description:

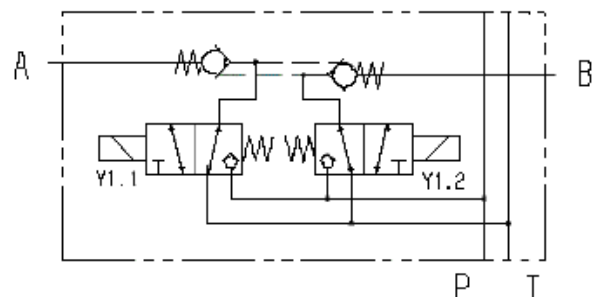
The CL02 valve series combines the advantages of the cost-effective monoblock design with those of the flexible disc design. Leakage-free 2/2 and 3/2 seat valves in cartridge design form the module's core. Dependent on the application, it is possible to revert to standard basic blocks from the module system or to construct a special basic block which is adapted to the machine. Currently, the basic blocks can be extended with up to eight valve discs, thus realising high functionality within small construction spaces. Several diameter combinations as well as the option to select between positive and negative covers provides the best possible conditions for being able to implement customer-specific requirements in an optimum manner.

Function:

The following standard versions are available:

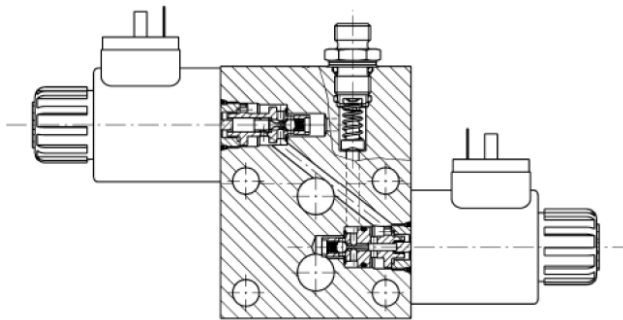
- 4/3-way
- 4/3-way with a check valve
- 3/3-way
- 3/3-way internal bypass check valve

Sample wiring diagram

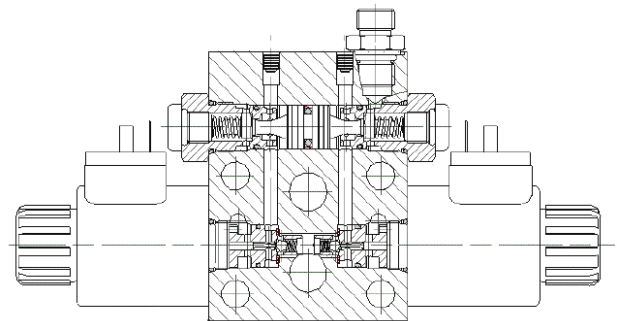


Directional seat valves CL02

Cross section of 3/3-way
internal bypass check valve



Cross section of 4/3-way
with a check valve



General data	Value	Unit	Specifications
Construction type			Valve module in disc design
Construction			Direct operated poppet valve
Sealing			Rubber-coated aluminium disc
Fitting position			As desired
Ambient temperature	- 25	°C	min.
	+ 60	°C	max.
Input operating pressure	250	bar	max.
Output operating pressure	250	bar	max.
Counterpressure on T	210	bar	max.
Oil temperature	- 25	°C	min.
	+ 80	°C	max.
Oil viscosity	2.8	cSt	min.
	380	cSt	max.
Opt. operational viscosity	35	cSt	
Permissible oil types			Mineral oil (HL, HLP) according to DIN 51524
Oil purity			according to ISO 4406: class 20/22/17
Weight			Dependent on the valve block
Volume flow	20	l/min	max.