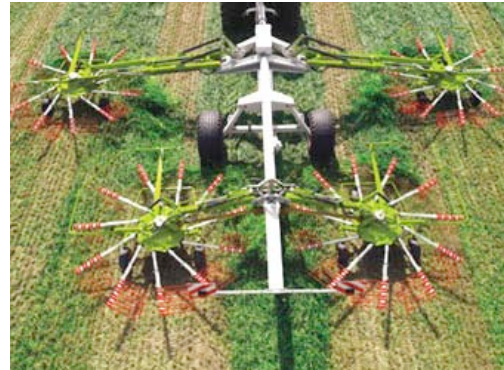


Proportional valves CL06, pilot operated

Operating pressure: max. 350 bar
Flow: max. 60 l/min (activation: electrohydraulic)



General description:

CL06 proportional directional valves are used for the infinitely variable motion control of hydraulic motors and cylinders through an electrical activation cycle. They can be used in load-sensing systems with constant pumps and variable hydraulic pumps and have an upstream pressure maintenance valve for load compensation.

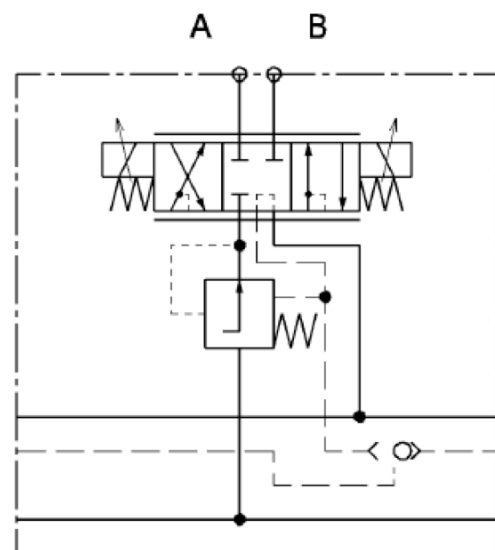
As a segment valve, the CL06 proportional valve is easy to combine flexibly with other valve segments as compact mobile control blocks. An optional standardised flange on the upper side enables the flanging of application-specific special functions such as blocking valves or lowering brake valves.

Therefore, customer-specific functions can be realised, the geometric location of the connections and the attachment taken into account and, as necessary, individual components can be disassembled.

Optionally, the valve can meet corrosion-proofness category K2 according to CLAAS works standard CN 04 0102 (white rust starts after 96h salt spray fog test).

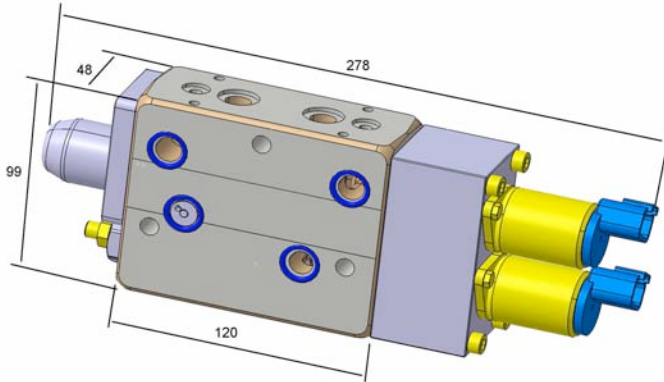
The space between the magnetic coil and the pole tube is sealed with O-rings to avoid the penetration of aggressive fluids such as plant sap.

Wiring diagram

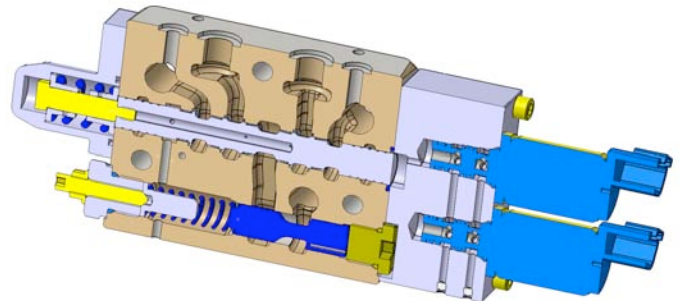


Proportional valves CL06, pilot operated

Dimensions



Cross section



General data	Value	Unit	Specifications
Construction type			4/3-direction disc construction type sliding valve
Construction			Directly controlled LS proportional valve
Flow direction			P -> A / B ->T; P -> B / A ->T; Floating position available upon request
Sealing			NBR
Neutral position			Deactivated open or closed
Fitting position			As desired, preferably horizontal
Ambient temperature	- 25	°C	min.
	+ 50	°C	max.
Input operating pressure	350	bar	max.
Load operating pressure	400	bar	max.
Tank operating pressure	30	bar	max. (210 bar pressure-tight < 30 min.)
Oil temperature	- 25	°C	min.
	+ 80	°C	max.
Oil viscosity	4	cSt	min.
	380	cSt	max.
Opt. operational viscosity	35	cSt	
Permissible oil types			Mineral oil (HL, HVLP) according to DIN 51524 Bio oil HVLPD HC / HEPR-biologically degradable Further liquids upon request
Oil purity			ISO 4406: class 21/18/14 or better
Weight			
Regular oil flow P -> A,B			20, 30, 40, 50, 60 l/min at nominal current 1.5 A 12 VDC or 0.8 A 24 VDC
Influx	140	l/min	max. to input pressure scales
Leakage at A or B	< 60	cm ³ /min.	at load pressure 100 bar (HLP 46 at 40 °C)
Control pressure difference	7 - 8	bar	min.
Hysteresis	+/- 5	%	Activation-dependent, related to the nominal value
Rec. PWM frequency	130	Hz	Current-regulated for magnetic coil temperature compensation