

Directional seat valves CL04

Operating pressure: max. 350 bar
Flow: max. 50 l/min



General description:

The CL04 valve family directional seat valves are screwed cartridges for an operating pressure of up to 350 bar (420 bar static). Due to their high switching capacity and highly compact dimensions, they are predestined for mobile hydraulics applications.

As well as 2/2-way valves and the 3/2-way cartridges with negative switch overlapping, they also exist with positive overlapping and are highly appropriate for application in constant pressure systems.

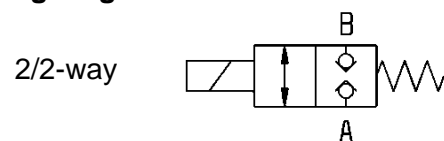
All pistons and bushing are/is hardened. The externally located parts meet at a minimum corrosion-proofness category K2 according to CLAAS works standard.

The space between the magnetic coil and the pole tube is sealed with O-rings to avoid the penetration of aggressive fluids such as plant sap.

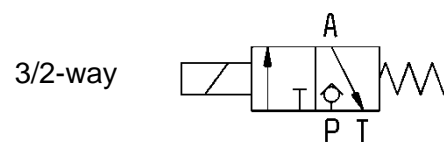
Function:

The CL04 cartridges are highly suitable for all positioning and holding functions as well as for pre-control of upstroke valves: they serve as basic elements in the CLAAS mobile kits as well as in the newly developed flangeable CL04 directional valve discs (4/3; 4/3 with a check valve; 2x 3/3).

Wiring diagrams



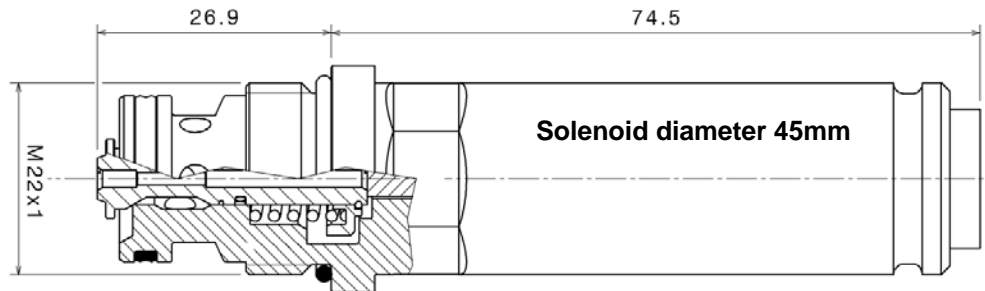
50 l/min at 350bar



30 l/min at 350bar

Directional seat valves CL04

Cross section: 2/2-way cartridge with emergency manual operation (standard)



General data	Value	Unit	Specifications
Construction type			Directional seat valve
Construction			Electrical mechanical, direct operated
Dynamic operating pressure	350	bar	max.
Load pressure static	420	bar	max.
Nominal volume flow 2/2-directional	50	l/min	
Nominal volume flow 3/2-directional	40/30	l/min	Negative / positive cover
Check valve nominal volume flow	60	l/min	
Leakage at 350 bar	<5	Tr/min	
Ambient temperature	-25	°C	min.
	60	°C	max.
Oil temperature	-25	°C	min.
	80	°C	max.
Oil viscosity	10	cSt	min.
	35	cSt	Optimal
	420	cSt	max.
Oil purity			min. 21/18/15 according to ISO 4406
Permissible oil types			Mineral oil (HL, HLP; HVLPD) according to DIN 51524; other pressure fluids upon request
Supply voltage	12 / 24	VDC	+/- 10%
Coil resistance at 20°C	4.55	Ohms	12VDC coil
	17.6	Ohms	24 VDC coil
Duty cycle	100	%	
Connectors:			DIN 43650; German DT04-2P; AMP Junior Timer
Switch times 2/2-directional	40 - 100	ms	Dependent on the volume flow
Switch times 3/2-directional negative and positive	40 - 100 40 - 150	ms ms	Dependent on the volume flow
Sealing			NBR, others upon request
Starting torque	50	Nm	-5Nm
Hole shaping 2/2-directional (short)			0109 268.0
Hole shaping 3/2-directional (long)			0109 269.0