



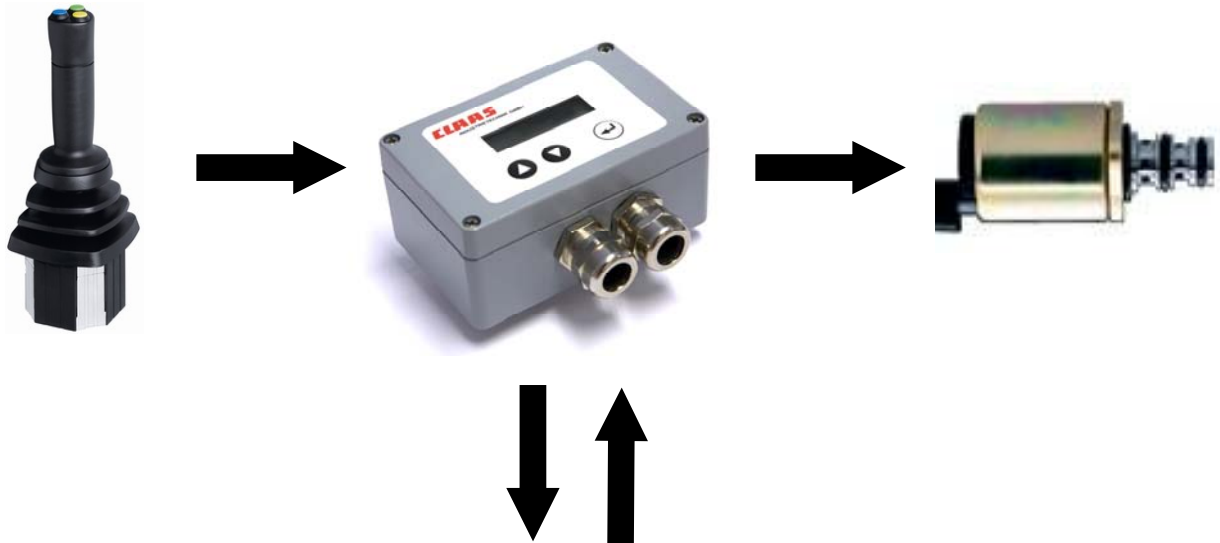
General description:

The CLAAS CHC (CLAAS hydraulic controller) is a compact module for current-regulated activation of up to 4 solenoid valves. The comprehensive parameterability ensures that system settings can be made immediately without cumbersome software application. The plan values can optionally be pre-defined via signal inputs or CAN bus.

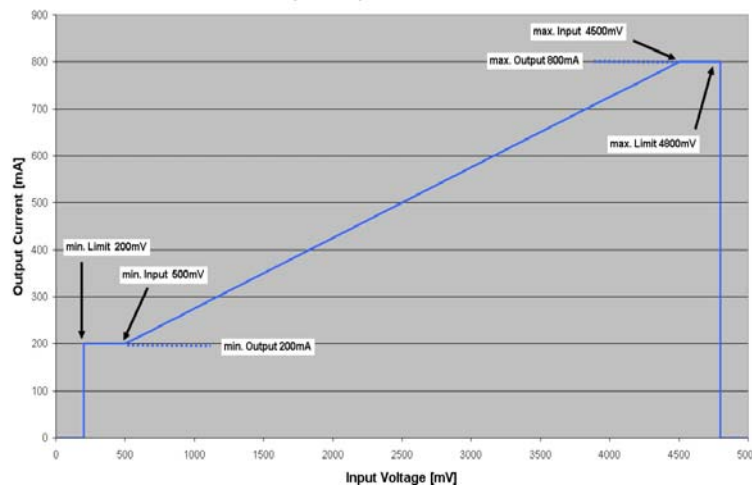
Pin assignment

Pin	Description
1	Electronic supply
2	Power supply
3	Power earth
4	Power output 1
5	Power earth
6	Power output 2
7	Power earth
8	Power output 3
9	Power earth
10	Power output 4
11	Power earth
12	Clock output
13	Digital input 1
14	Digital input 2
15	CAN low
16	CAN high
17	5V sensor output
18	Sensor earth
19	Analogue input 1 For power output 1
20	Analogue input 2 For power output 2
21	Analogue input 3 For power output 3
22	Analogue input 4 For power output 4

Connection example



Input / Output Characteristic



General data	Value	Unit	Specifications
Inputs	4		Power or voltage
Outputs	4		PWM with / without power regulation
Outputs	1		Sensor voltage
Pin	24	pin	Clamping connector WAGO CAGE clamp
Protection category			IP67 without display, IP65 with display
Processor	16	bit	Fujitsu 24 MHz
CAN	1		250 KBit/s
Standards and guidelines			CN050215; ISO 6750 Part 1 to 4